

Supplement to:

Journal of Agriculture and Rural Development in the Tropics and
Subtropics

Vol. 122 No. 2 (2021) 269–278 | <https://doi.org/10.17170/kobra-202110274964>



**Rainfall erosivity, soil erodibility and natural water erosion potential
in the Huambo region, Angola**

Ludmila Meira, Pedro Oliveira e Silva, Alexandra Tomaz

Appendix 1. Legend of the soil reference groups and qualifiers in the soil map of Angola (Dewitte *et al.*, 2013; Jones *et al.*, 2013)

ACha - Haplic Acrisols
ALgl - Gleyic Alisols
ALha - Haplic Alisols
ARbr - Brunic Arenosols
ARfl - Ferralic Arenosols
ARha – Haplic Arenosols
ARpr - Protic Arenosols
ARwl - Hypoluvic Arenosols
CLha - Haplic Calcisols
CLlv – Luvic Calcisols
CLpt - Petric Calcisols
CMcr - Chromic Cambisols
CMeu – Eutric Cambisols
CLfl - Ferralic Cambisols
FLeu – Eutric Fluvisols
FLsz - Salic Fluvisols
FRha – Haplic Ferralsols
FRpl – Plinthic Ferralsols
FRro – Rhodic Ferralsols
Frum – Umbric Ferralsols
FRxa – Xanthic Ferralsols
GLhaar – Arenic Haplic Gleysols
GLmo - Mollic Gleysols
LPeu – Eutric Leptosols
LPli – Lithic Leptosols
LVcc – Calcic Luvisols
LVcr – Chromic Luvisols
LVgl – Gleyic Luvisols
LVha – Haplic Luvisols
LXha - Haplic Lixisols
NT – Undifferentiated Nitisols
PHlv - Luvic Phaeozems
PZcb - Carbic Podzols
RGdy - Dystric Regosols
SNcc - Calcic Solonetz
VRcc – Calcic Vertisols

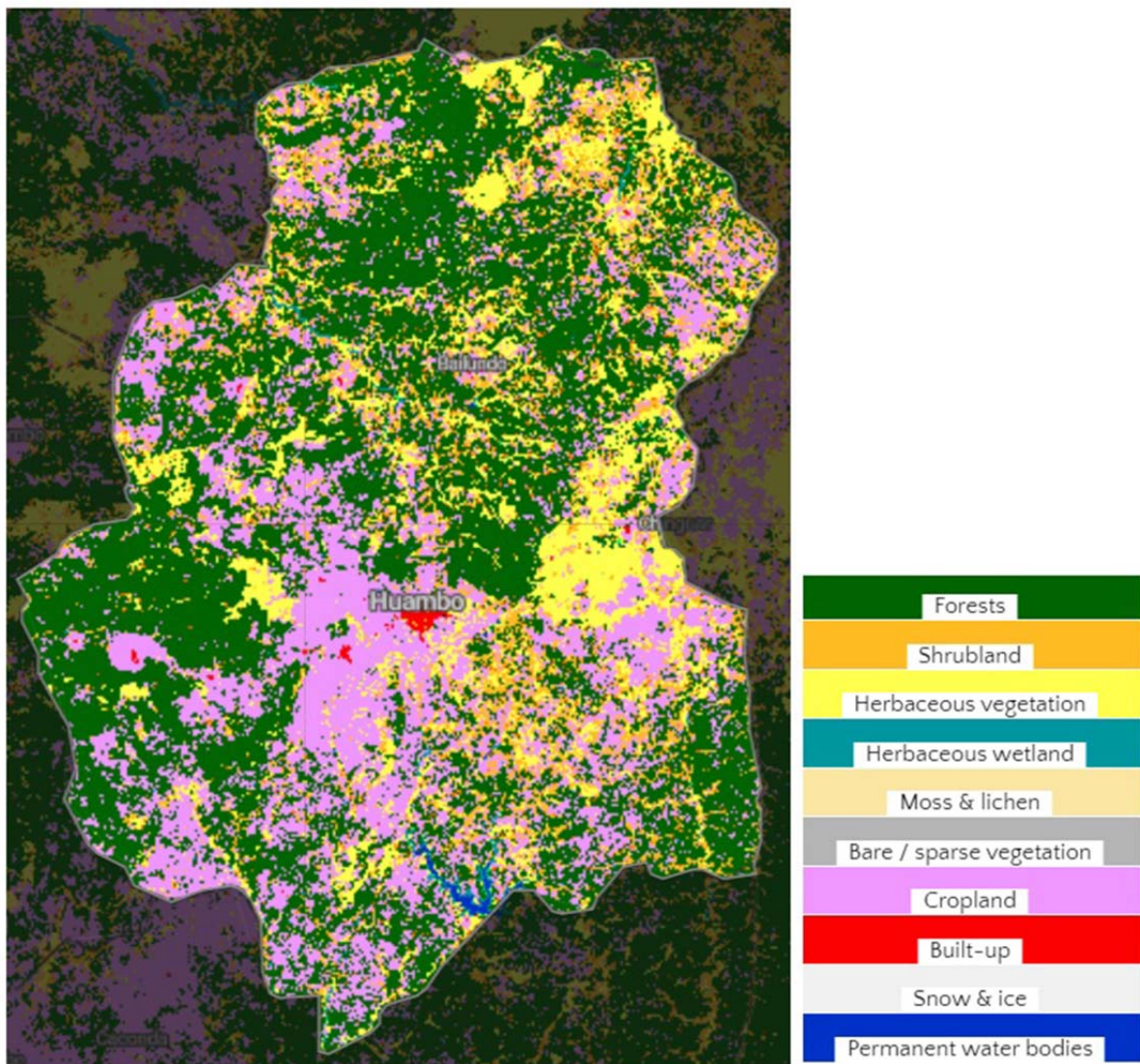


Fig. S1. Main types of land cover in Huambo in 2019 (Buchhorn *et al.*, 2020)